

Drayton Bassett Parish Council

Parish Clerk: Robert Pritchard

Email: parishclerk@draytonbassett-pc.gov.uk

February 2026

REPORT OF THE CLERK

Website:

Useful reporting links have been added to the contact section of the parish council website to improve accessibility and ease of reporting issues.

Dog poo bags:

Usage has been low at the dispenser on Heathley Lane, an estimated 10 bags have been used.

LDC Clean & Green bid:

A dual bin and bag dispenser has been ordered and will be installed at the location detailed in the LDC grant approval.

Speed Indicator Device (SID)

There is still no response from Staffordshire County Council. We remain without an indication on the timescales or outcome of this SID review. Lichfield District Council are aware of the situation.

Youth football team

The council has been approached by residents interested in forming an under-13 football team. The parish council will work with those involved to support the proposal. Further information will be brought to the March meeting.

Local Council Award Scheme

The application has been submitted; the council will be assessed in May.

Handyman

Work by the handyman contractor is ongoing. Photographs of recent path clearance work have been shared on the council's Facebook page and have received a high level of positive engagement and feedback from residents.

Local Government Reorganisation

The Government has launched a formal consultation on Local Government Reorganisation in Staffordshire. The consultation considers the size and structure of the new council that would replace Lichfield District Council and Staffordshire County Council. The consultation period runs for seven weeks and closes at 23:59 on 26 March 2026. Further details are available on the parish council website and Facebook page.

Sakura Cherry Tree Project

The council has received two cherry trees as part of the Sakura Cherry Tree Project. This project is a tree planting program in the United Kingdom. It is intended to symbolise friendship between the United Kingdom and Japan.

Earmarked Reserves 2026/27

26/27 Opening Position

Description	Amount (£)
Existing remaining reserves 2025/26	19,191
Expected transfer from remaining year-end balances	14,900
Total available for allocation	34,091

Existing 25/25 Reserves

Purpose	Amount (£)
Scheduled repairs to play area	1,603
Tree survey	1,460
CIL – match funding for speed signs	1,085
Tree works in accordance with survey	522
Replacement swing	14,245
Emergency electrical work	276
Total planned allocations	19,191

Earmarked Reserves from 1st April 2026 Financial year

Reserve	Amount (£)
Election Reserve	4,000
Speed signs	4,000
Play area renewal fund	17,000
Pavilion building fund	4,000
General contingency	5,000
Total earmarked reserves	34,000

Drayton Bassett Parish Council

Reconciliation Report – January 2026

Opening Balance 1/1/26	43,028.20
Income for the period	4.25
Expenditure for the period	873.92
Closing Balance 31/01/26	42,158.53

Breakdown of payments:				NET	VAT	GROSS	CREDIT
02/01/2026	Lichfield Council	DD	Rates	£ 175.00	£ -	£ 175.00	
07/01/2026	Lloyds Bank	PAY	Bank Charges	£ 4.25	£ -	£ 4.25	
07/01/2026	Lloyds Bank	DEP	Bank Charges (Refund)	£ -	£ -	£ -	£ 4.25
16Jan2026	SAGE UK LTD	DD	Payroll	£ 11.00	£ 2.20	£ 13.20	
22Jan2026	EDF ENERGY	DD	SLCC Membership Fee	£ 36.04	£ 1.80	£ 37.84	
26Jan2026	WATER PLUS	DD	Water	£ 8.21	£ -	£ 8.21	
27Jan2026	B/P to: Emma Wilson	FPO	Land Registry Search	£ 7.00	£ -	£ 7.00	
27Jan2026	B/P to: ROBERT PRITCHARD	FPO	Salary	£ 287.90	£ -	£ 287.90	
27Jan2026	B/P to: NALC	FPO	LCAS	£ 50.00	£ 10.00	£ 60.00	
27Jan2026	B/P to: Reid Electrical	FPO	Building repairs	£ 254.00	£ -	£ 254.00	
27Jan2026	B/P to: Vision ICT	FPO	IT Charges	£ 20.00	£ 4.00	£ 24.00	
31Jan2026	Service Charge		Bank Charges	£ 2.52	£ -	£ 2.52	
Total expenditure				£ 855.92	£ 18.00	£ 873.92	£ 4.25

Bank balance agreed to bank statement

Signed by Chairman _____

Date _____

Best Kept Village & Community



(<https://staffordshire.foundation/bkvc-proto/>)

The Best Kept Village Competition began in Staffordshire in 1956, and has been running continuously since then. The competition was developed to encourage village residents to take pride in their communities, and was originally managed by the Rural Community Council. Sadly in 2017 the RCC took the decision to close, but wanted to ensure that the competition continued, and so approached the Community Foundation to transfer the management of it. Recognising the importance of ensuring that an event steeped in history continues, and recognising the value of an event to bring different communities together, the Community Foundation took over the administration of the competition from 2018.

In Shropshire the competition was managed by a different organisation, and ran until the 1990s, when it was abandoned. As the Community Foundation covers both Staffordshire and Shropshire we thought it was important to roll the competition out to Shropshire too.

Whilst we want to retain the history of the competition, we also recognise that times have changed and people's attitudes have changed too. The competition is not about finding the most beautiful, old, or picturesque village any more, and the winners are more varied and diverse than you might think. We now

accept entries from housing estates or wards within districts. The most successful communities are often those that achieve the greatest involvement and community spirit from their residents. We have also developed a number of 'supplemental awards' which recognise and reward different aspects of village/community life, so even if a village/community cannot enter the main village awards, they can still showcase their work and community spirit.

The primary method of entry has also changed, with the bulk of an entry now being able to be submitted online, from a computer, tablet or phone, rather than having to fill out a massive paper application form.

Partners for 2026 –

For both counties we are really excited to extend the awards this year to anyone under 25 who submits a short film

This category is for young filmmakers who want to shine a light on sustainable thinking and the place they call home.

Whether it's climate action, community heroes, or small changes making a big difference, we want to see your ideas on screen.

Films entered in the 2026 BKVC awards are automatically entered into **Earth Stories Film Festival**, a multi-award winning, environmental film festival dedicated to amplifying young voices.



Our sponsors for Staffordshire 2026...

OWEN Family Trust

MAIN SPONSOR – The Owen Family Trust focuses on making grants to registered charities based in Birmingham, the Black Country and Staffordshire, with a particular emphasis on projects where there is a real community and people focus, where there is a tangible output that supports a community, encourages a sense of belonging, and enhances the opportunities and quality of life of those in the community – bringing a sense of purpose, fulfilment or even excitement to the days, weeks and months ahead.

The origins of the Trust lie with the second generation of the Owen Family and Sir Alfred Owen, Head of the Owen Organisation and the Rubery Owen Group of companies based in Darlaston, and employing 16,000 people across the globe during the 1960s.

We are currently looking for new sponsors for 2026...please get in touch if you are interested in being connected to this great event!

**Our sponsors for Shropshire
2026...**

We are currently looking for new sponsors for 2026...please get in touch if you are interested in being connected to this great event!

About BKVC

Categories – Staffordshire

In Staffordshire there are three separate categories that people can enter. You could enter all of them, or just one or two. Which ones you choose to enter is up to you.

The first competition relates to the village or estate itself. The second relates to supplementary competitions aimed at individuals. The third category, sponsored by CPRE, recognises a wider contribution to village life.

Village Awards

In this category we make five separate awards:

Best Small Village (North)

This award is presented to the best village in the north of the county, that being any area in Newcastle-under-Lyme, the Staffordshire Moorlands or Stoke-on-Trent.

We recognise that some villages are small and compact whilst others are quite spread out, and so size is determined on population.

Best Small Village (South)

This award is presented to the best village in the south of the county, that being any area in Cannock Chase, East Staffordshire, Lichfield, South Staffordshire, Stafford and Tamworth. We recognise that some villages are small and compact whilst others are quite spread out, and so size is determined on population.

Best Large Village (North)

This is presented to the best village large village in the north of the county. Large villages are considered to have a population of more than 1500.

Best Large Village (South)

This is presented to the best large village in the south of the county. Large villages are considered to have a population of more than 1500.

In each category we award a 1st and 2nd place. Each receives a certificate and cash prize that can be spent on something for their community. First place will receive £500 and the runner up £250.

Staffordshire's Best Kept Village & Community – Overall Winner

Awarded to the county's overall winner. A trophy and a further 3500 is awarded for this accolade.

Spirit of BKVC Awards

These awards are based not on what happens in your village, but how you present what happens in your area. The entry may have an environmental message, a message about keeping the area tidy, or just something that celebrates the area in which you live. It is a chance to let your artistic side out, and is a great way for children and young people to get involved. We will award a winner and a runner-up in each of five categories:

Picture This Competition (5 – 7 year olds)

This award is for entries from children aged 5 to 7. It can be a drawing, painting, or poster. We will accept a maximum of three entries from each village.

Picture This Competition (8 – 11 year olds)

This award is for entries from children aged 8 to 11. It can be a drawing, painting, or poster. We will accept a maximum of three entries from each village.

Vision of BKVC (Young People)

The Vision of BKVC award can accept entries of video, paintings, drawings, tapestry, cross-stitch, poetry and prose or short stories. This award is open to young people aged between 11 and 17.

Vision of BKVC (Adults)

The Vision of BKVC award can accept entries of video, paintings, drawings, tapestry, cross-stitch, poetry and prose or short stories. This award is open to anyone over 18.

'Earth Stories' Film award

Open to anyone under 25 yo. Who produce a short film of 1-10mins duration.

It is a category for young filmmakers who want to shine a light on sustainable thinking and the place they call home. Whether it's climate action, community heroes, or small changes making a big difference, we want to see your ideas on screen.

Living Countryside Awards

This category is sponsored exclusively by CPRE, and is broken down into four separate awards.

Inspiring Groups

This award recognises groups leading on environmental issues. This could include local community campaign groups fighting for better services and facilities in their area, groups offering advice to residents on matters such as planning, groups maintaining green spaces or carrying out biodiversity projects, litter-picking groups, or community transport groups.

Trailblazer Award

This award would recognise individuals who are going the extra mile to protect their local countryside. They could be people who are providing significant contributions to projects, or working to maintain parks, green spaces or local facilities. Individuals might be actively involved in developing activities and schemes in their community to make it a better place in which to live, work or go to school.

Made in Rural Staffordshire Award

This category celebrates local businesses who provide local produce, alcohol, crafts and everything in between, who add value to our local economy and make the county so unique and varied.

Countryside on Camera Award (all ages)

We would encourage everyone to submit their best photo of the Staffordshire countryside.

Categories – Shropshire
What is judged
Timeline
Briefings
How to enter

Previous Results

Best Kept Village & Community 2025 Results – Staffordshire
Best Kept Village & Community 2024 Results – Staffordshire
Best Kept Village & Community 2024 Results – Shropshire
Best Kept Village & Community 2023 Results
Best Kept Village & Community 2022 Results
Best Kept Village & Community 2021 Results
Best Kept Village & Community 2020 Results

| Contact |

(<https://staffordshire.foundation/core/contactus/>)

| Governance |

(<https://staffordshire.foundation/core/governance/>)

| Ethical Policy |

(<https://staffordshire.foundation/core/ethicalpolicy/>)

| Privacy Policy |

(<https://staffordshire.foundation/core/privacypolicy/>)

| Data Access Request |

(<https://staffordshire.foundation/core/dataaccessrequest/>)

| Appeals & Complaints |

(<https://staffordshire.foundation/core/complaints/>)

| Whistleblowing Policy |

(<https://staffordshire.foundation/core/whistleblowingpolicy/>)

2017 © The Community Foundation for Staffordshire |

Website Design by Red Box Stafford

(<http://www.redboxweb.co.uk/>)

Are You Part of a Local Group?

Groups like the WI, social clubs and regular meet-ups play a huge part in village life.

We're collecting details of all community groups in Drayton Bassett to support our entry into the Best Kept Village & Community Awards 2026.

Please tell Matt what your group does and when you meet.



Please get in touch so your group can be included.

Contact Councillor Matthew Gwynn:

matthewgwynn@draytonbassett-pc.gov.uk

Help Put Drayton Bassett on the Map

Are you part of a local group, club or activity?

We're applying for the Best Kept Village & Community Awards 2026 and want to make sure every group and activity in Drayton Bassett is included.

From walking groups and fitness classes to the WI, social clubs, activities at the Village Club or informal meet-ups – if it happens in the village, we'd love to hear about it.

**Please tell Matt:
What your group does
How often you meet
Who it's for**



Please get in touch so your group can be included.

Contact Councillor Matthew Gwynn:

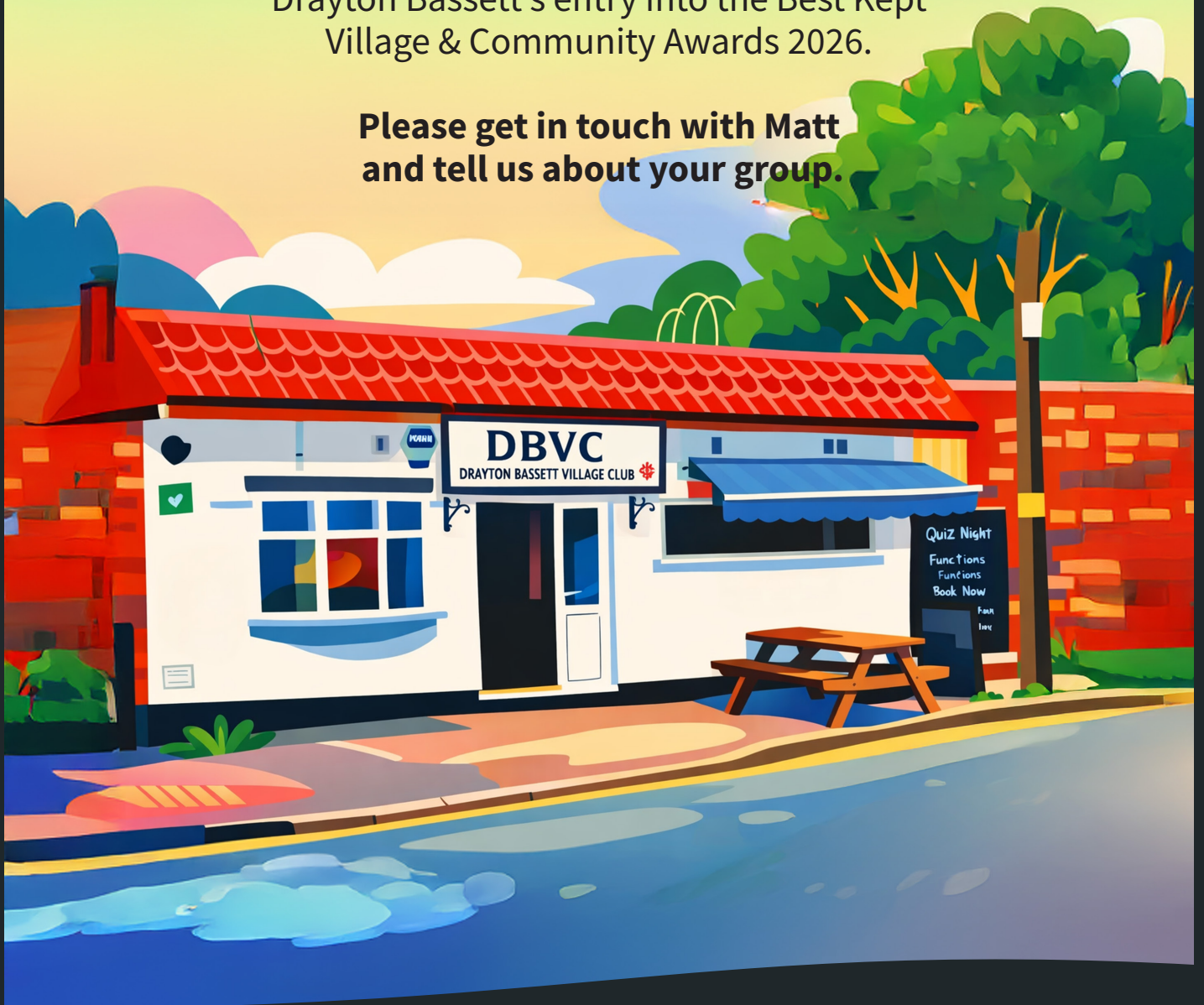
matthewgwynn@draytonbassett-pc.gov.uk

Activities at the Village Club?

From regular clubs to informal meet-ups, we want to make sure everything happening at Drayton Bassett Village Club is recognised

We'd love to include your group as part of Drayton Bassett's entry into the Best Kept Village & Community Awards 2026.

Please get in touch with Matt and tell us about your group.



Please get in touch so your group can be included.

Contact Councillor Matthew Gwynn:

matthewgwynn@draytonbassett-pc.gov.uk

Do You Run a Walking or Fitness Group?

Walking groups, keep-fit classes and activity groups are a vital part of our community.

We'd love to include your group as part of Drayton Bassett's entry into the Best Kept Village & Community Awards 2026.

Please get in touch with Matt and tell us about your group.



Please get in touch so your group can be included.

Contact Councillor Matthew Gwynn:

matthewgwynn@draytonbassett-pc.gov.uk

Drayton Bassett Parish Council

Drayton Bassett Playing Fields: Dog Control Policy

Drayton Bassett Playing Fields: Dog Control Policy

1. Purpose

The purpose of this policy is to ensure that the Playing Fields in Drayton Bassett remain a safe, clean, and enjoyable environment for all users, including children, families, sports participants, and visitors, while allowing responsible dog ownership.

2. Scope

This policy applies to **all dog owners and persons in charge of dogs** using the Playing Fields, including grassed areas, pathways, play areas, and any adjacent facilities.

3. Dogs on Leads

- All dogs **must be kept on a lead at all times** while on the Playing Fields.
- Leads must be of a suitable length to ensure the dog remains under close control.
- Dogs must not be tied to gates, fences, play equipment, or sports fixtures.

4. Control of Dogs

- Dog owners and handlers must keep their dogs **under proper control at all times**.
- Dogs must not behave in a manner that causes nuisance, alarm, distress, or danger to other users, livestock, or wildlife.
- Aggressive or persistently uncontrolled dogs must be removed from the Playing Fields immediately.

5. Fouling and Cleanliness

- Dog owners and handlers are **legally and personally responsible** for cleaning up after their dogs.

- All dog fouling must be removed immediately and disposed of in an appropriate bin or taken home.
- Failure to clean up after a dog is unacceptable and may result in enforcement action where applicable.

6. Restricted Areas

- Dogs are **not permitted** in designated children's playing areas, marked sports pitches during use, courts, BMX track or any other areas where signage indicates restrictions.
- Owners must observe and comply with all posted signs relating to dog control.

7. Health and Safety

- Dog owners must ensure their dogs do not interfere with organised activities, sports events, maintenance work, or emergency access.
- Any incidents involving injury, damage, or significant disturbance caused by a dog should be reported to the appropriate authority or managing body.

8. Enforcement

- This policy is supported by relevant legislation, including local by-laws and Public Spaces Protection Orders (where applicable).
- Failure to comply with this policy may result in being asked to leave the Playing Fields and could lead to further action by the relevant authority.

9. Review

This policy will be reviewed periodically to ensure it remains effective, proportionate, and aligned with current legislation and community needs.

Date Created	Date Adopted	Date Revised	Review Date
February 2026			February 2027